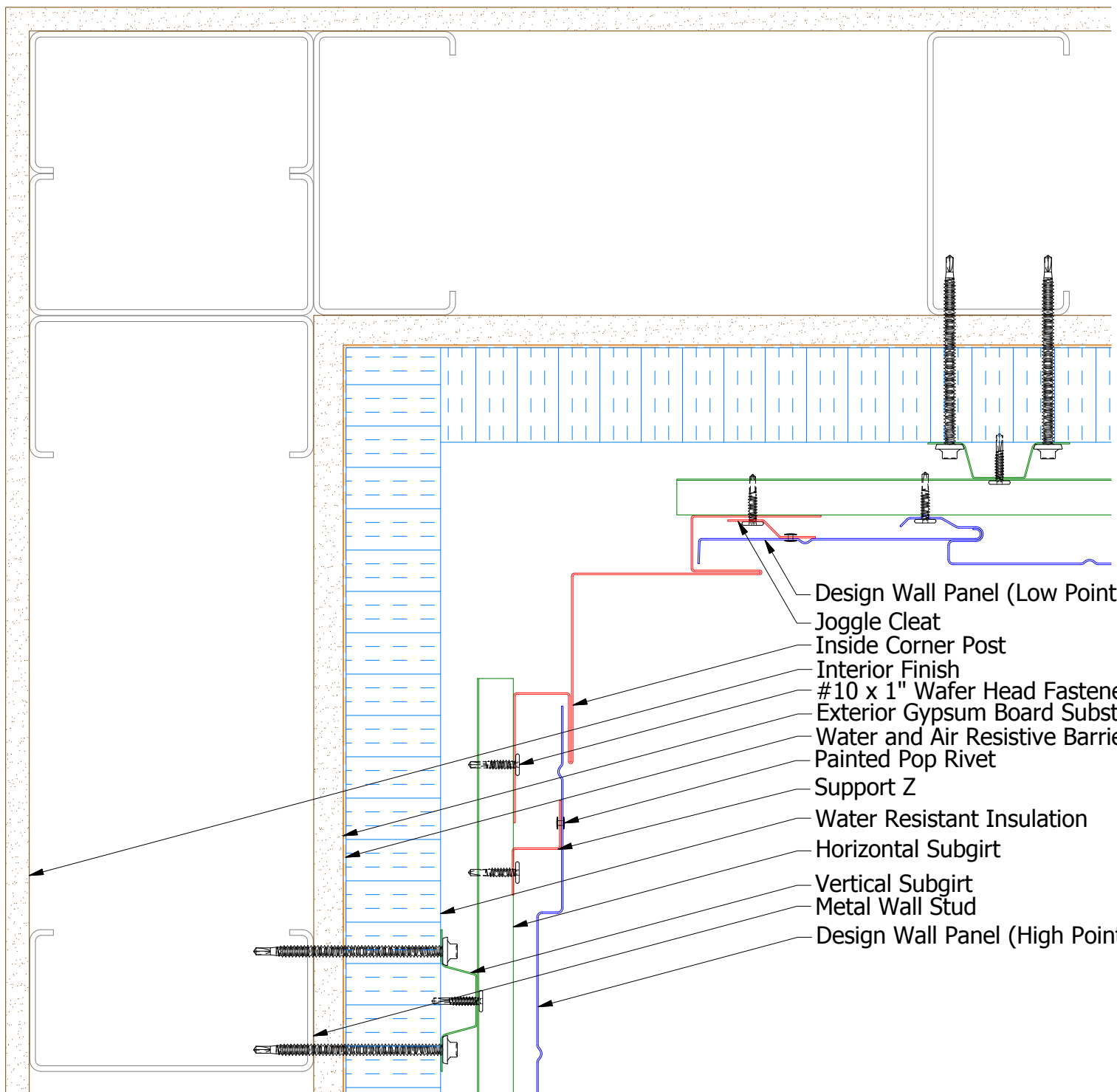
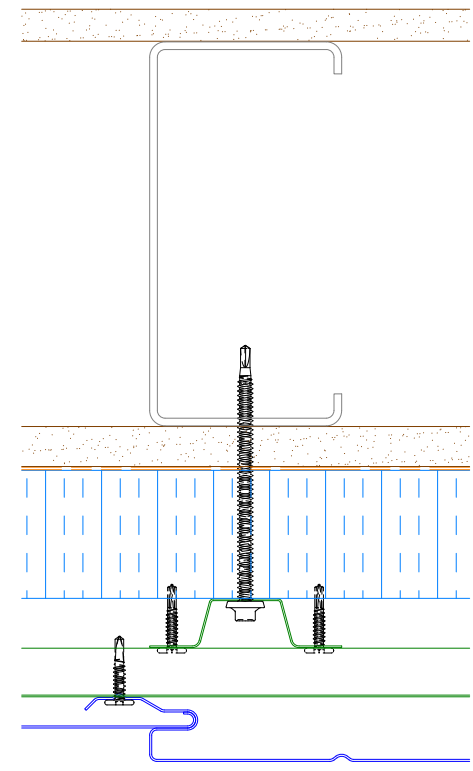


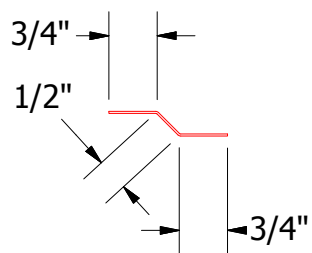
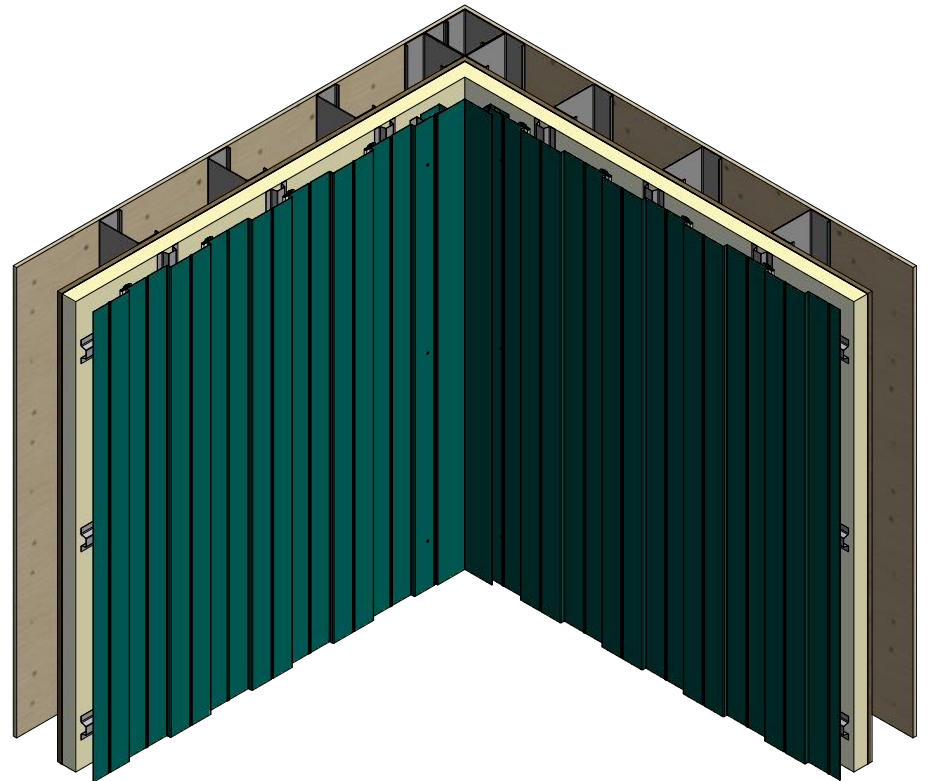
Vertical Panel



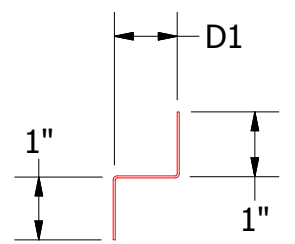
- Design Wall Panel (Low Point Panel)
- Joggle Cleat
- Inside Corner Post
- Interior Finish
- #10 x 1" Wafer Head Fastener
- Exterior Gypsum Board Substrate
- Water and Air Resistive Barrier
- Painted Pop Rivet
- Support Z
- Water Resistant Insulation
- Horizontal Subgirt
- Vertical Subgirt
- Metal Wall Stud
- Design Wall Panel (High Point Panel)



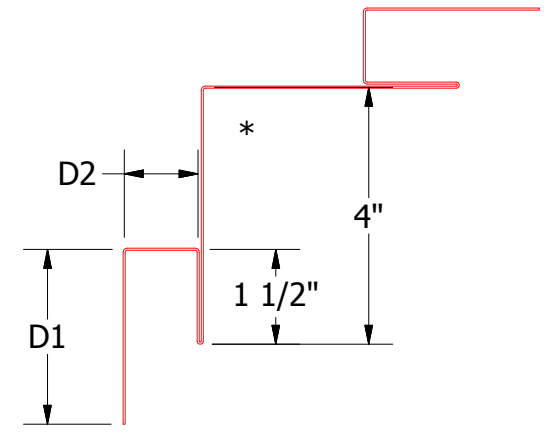
Alternate Subgirt Orientation




Joggle Cleat
DSA975/DWA975



Support Z
DWA681: D1= 1"
DSA681: D1= 1 5/8"



Inside Corner Post
DWA601: D1= 2 3/4", D2= 1/8"
DSA601: D1= 3", D2= 7/8"

 ATAS INTERNATIONAL, INC Allentown PA 610-395-8445 Mesa AZ 480-558-7210		TITLE Design Wall Open Inside Corner Detail	
		DWG. NO.	DR DMR
REV. NO.	DATE	DESCRIPTION OF REVISION	BY APP
MATERIAL		SH. SIZE B	SCALE X:X