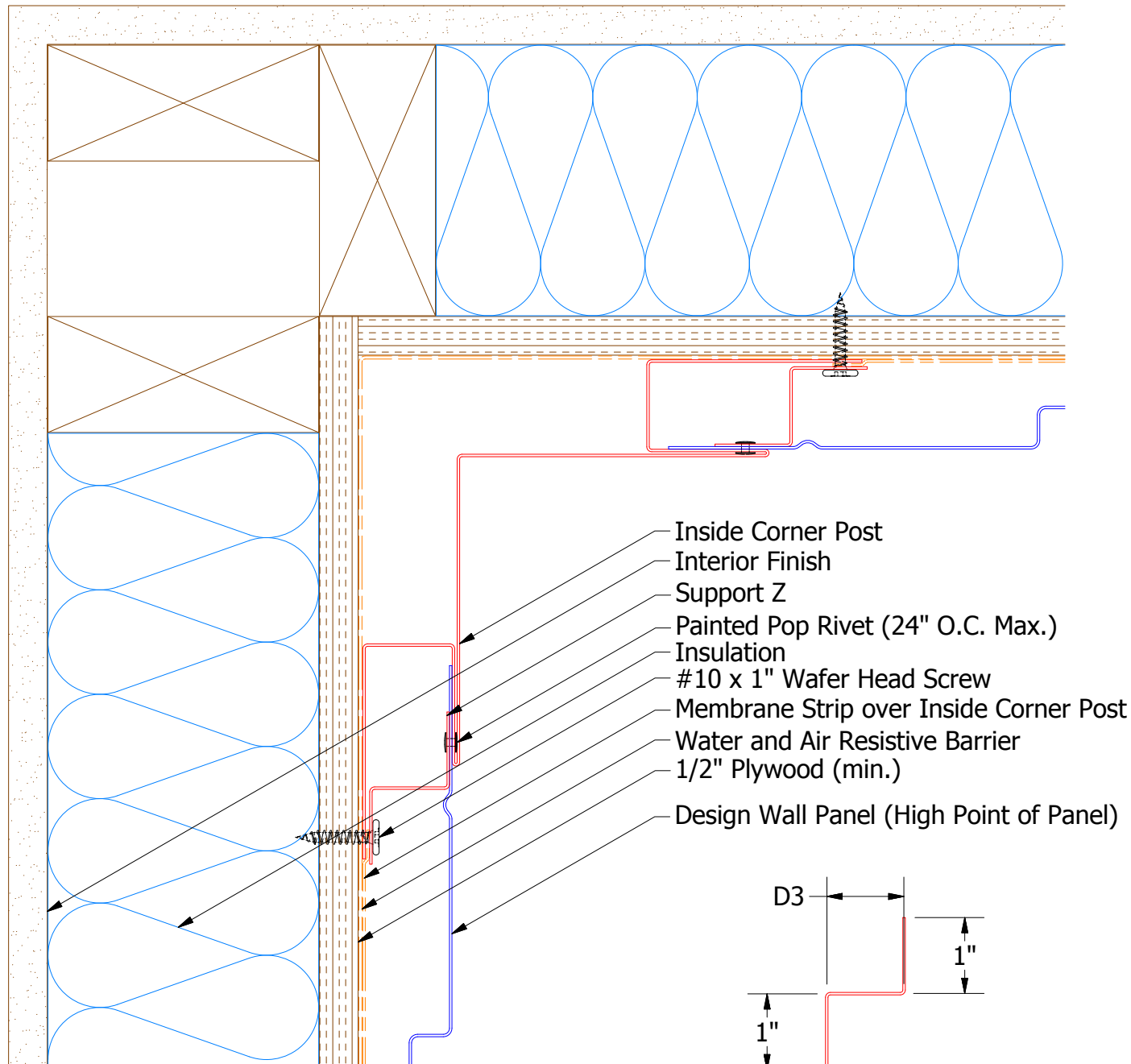
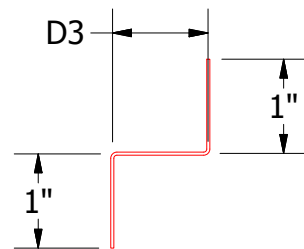


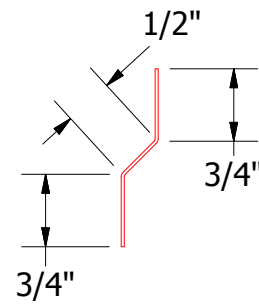
Vertical Panel



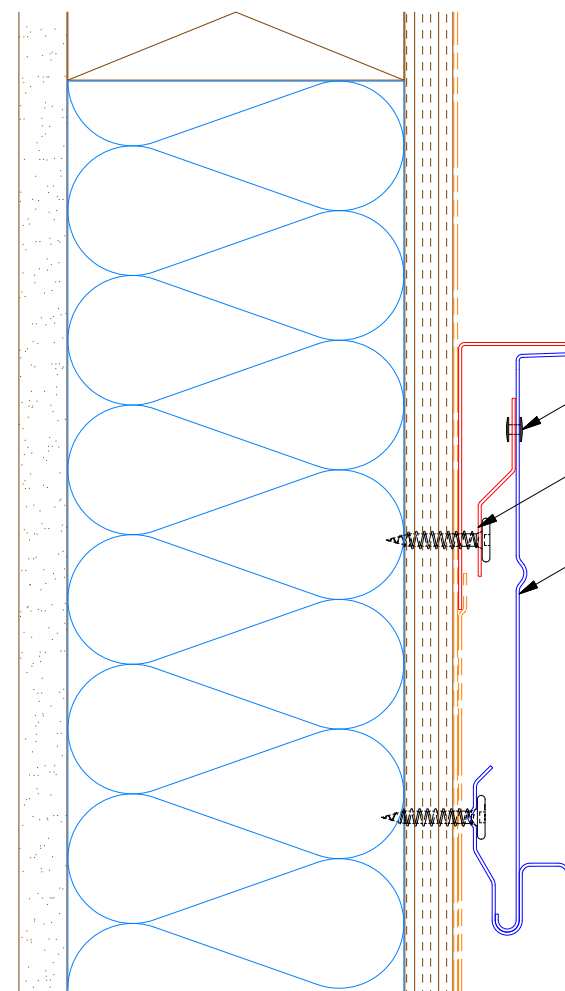
- Inside Corner Post
- Interior Finish
- Support Z
- Painted Pop Rivet (24" O.C. Max.)
- Insulation
- #10 x 1" Wafer Head Screw
- Membrane Strip over Inside Corner Post
- Water and Air Resistive Barrier
- 1/2" Plywood (min.)
- Design Wall Panel (High Point of Panel)



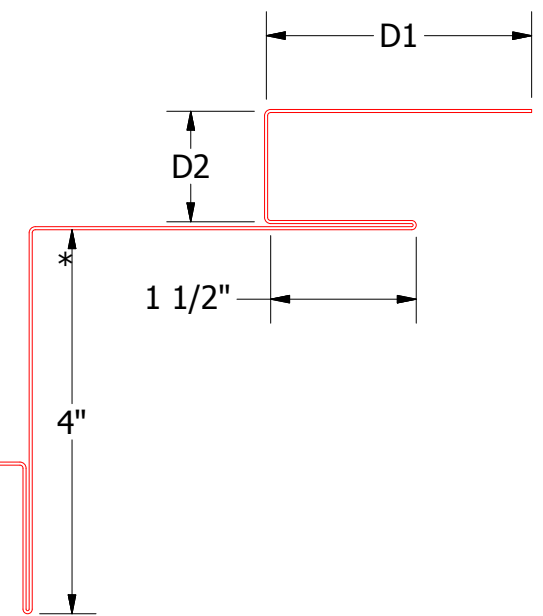
Support Z
 DWA681: D3=1"
 DSA681:D3=1 5/8"



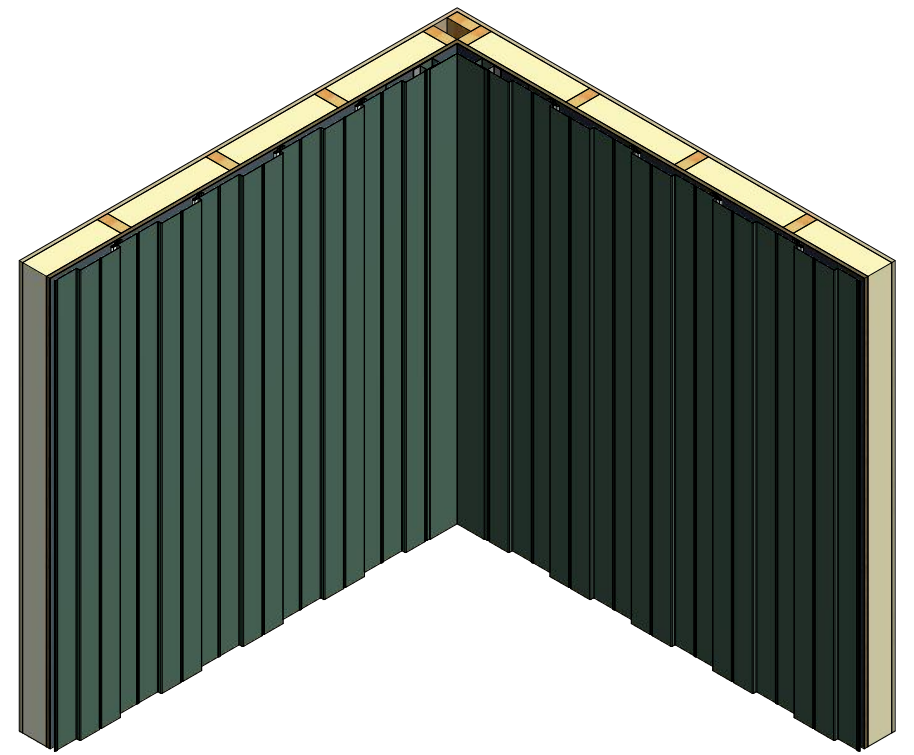
DWA975/DSA975 - Joggle Cleat



- Inside Corner Post
- Painted Pop Rivet (24" O.C. Max.)
- Joggle Cleat
- Design Wall Panel (Low Point of Panel)



Inside Corner Post
 DWA601: D1= 2 3/4; D2= 1 1/8"
 DSA601: D1= 3; D2= 1 7/8"



ATAS ATAS INTERNATIONAL, INC
 Allentown PA
 610-395-8445
 Mesa AZ
 480-558-7210

TITLE		Design Wall Inside Corner Detail	
DWG. NO.	DR	DMR	DATE 6/27/2016
	APP	DAS	DATE 7/26/16
MATERIAL	SH. SIZE	B	SCALE X:X

REV. NO.	DATE	DESCRIPTION OF REVISION	BY	APP