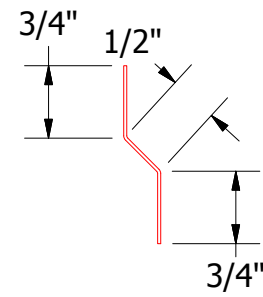
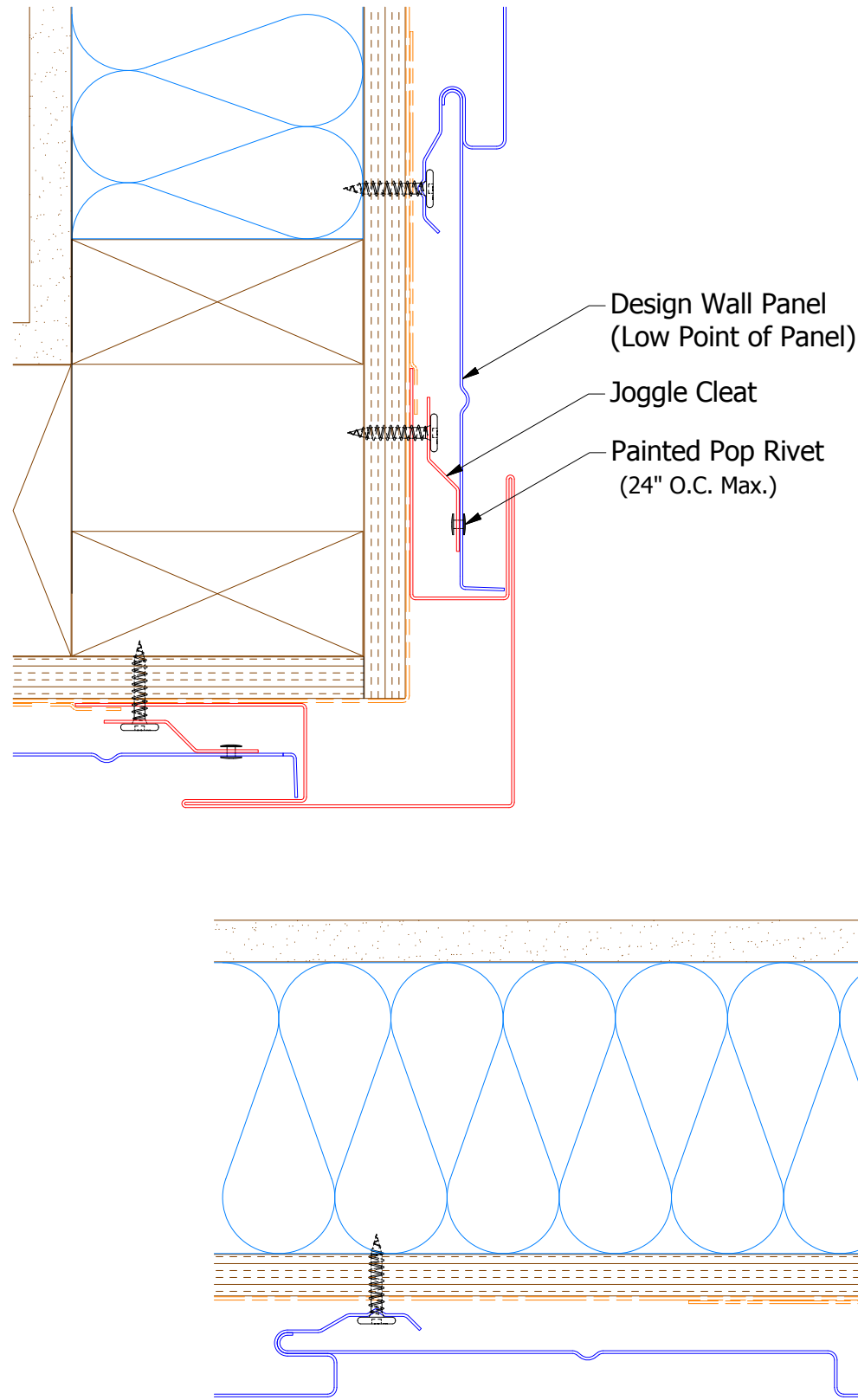
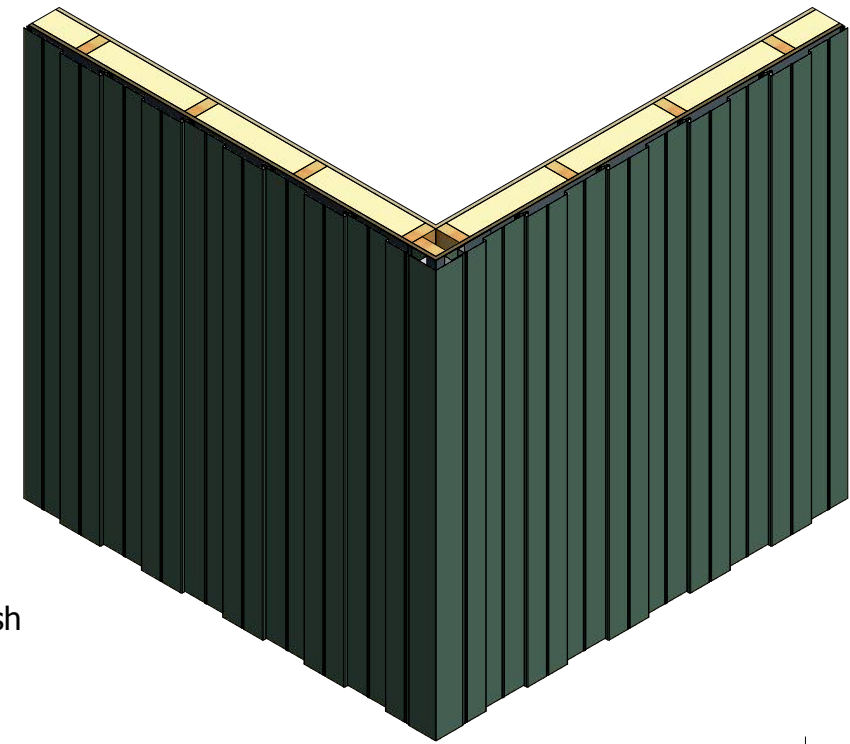


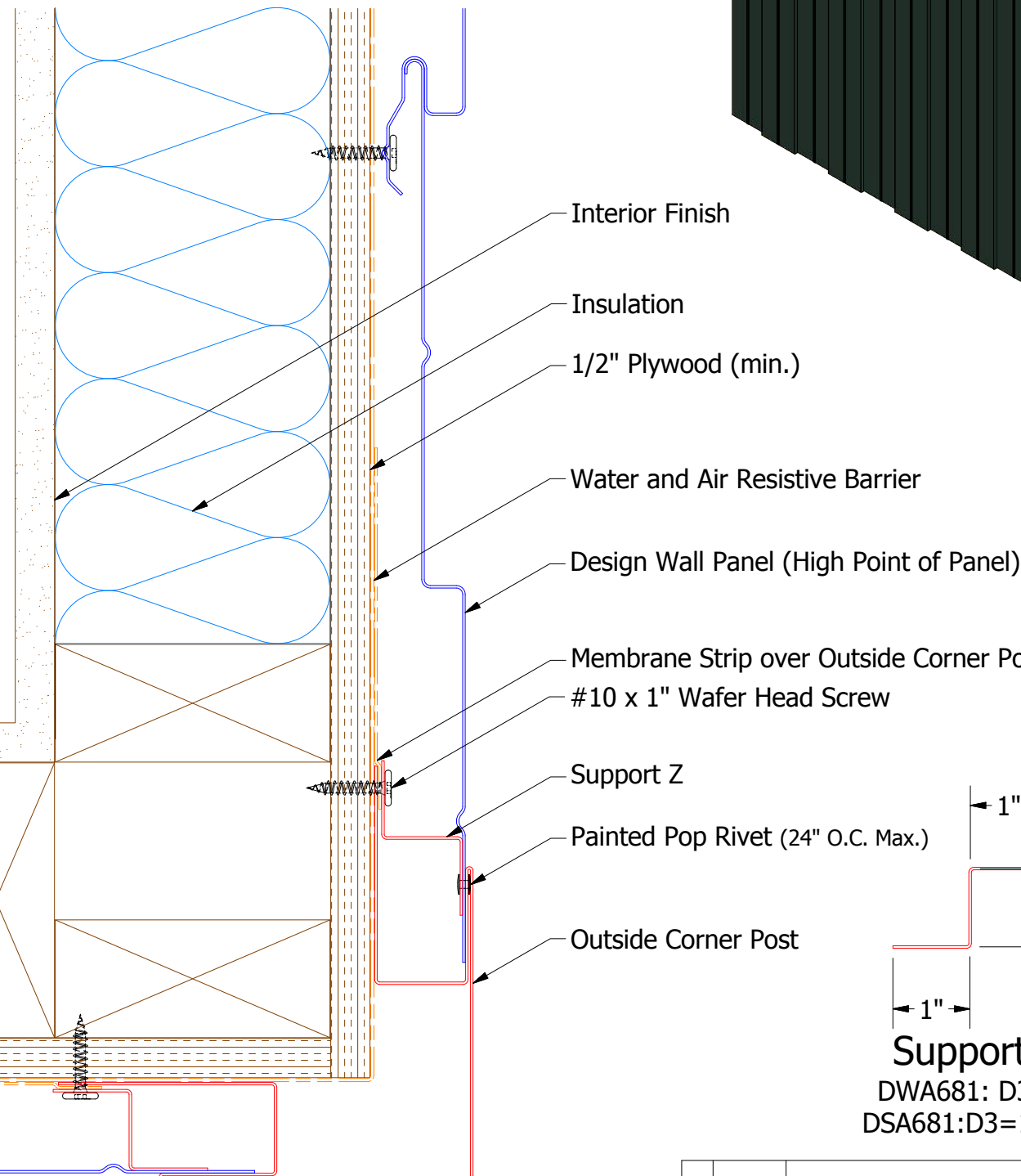
Vertical Panel



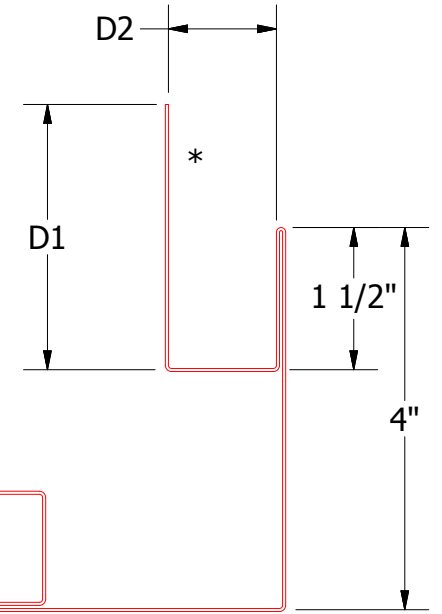
DWA975/DSA975 - Joggle Cleat



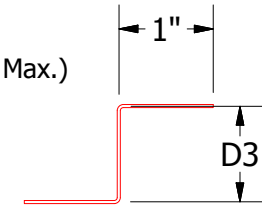
- Design Wall Panel (Low Point of Panel)
- Joggle Cleat
- Painted Pop Rivet (24" O.C. Max.)



- Interior Finish
- Insulation
- 1/2" Plywood (min.)
- Water and Air Resistive Barrier
- Design Wall Panel (High Point of Panel)
- Membrane Strip over Outside Corner Post
- #10 x 1" Wafer Head Screw
- Support Z
- Painted Pop Rivet (24" O.C. Max.)
- Outside Corner Post



Outside Corner Post
 DWA602: D1= 2 3/4; D2= 1 1/8
 DSA602: D1= 3; D2= 1 7/8



Support Z
 DWA681: D3=1"
 DSA681: D3=1 5/8"

ATAS ATAS INTERNATIONAL, INC
 Allentown PA
 610-395-8445
 Mesa AZ
 480-558-7210

TITLE **Design Wall Outside Corner Detail**

REV. NO.	DATE	DESCRIPTION OF REVISION	BY	APP	DWG. NO.	DR	DATE
						DMR	6/28/2016
						DAS	7/26/16
					MATERIAL	SH. SIZE	SCALE
						B	X:X